

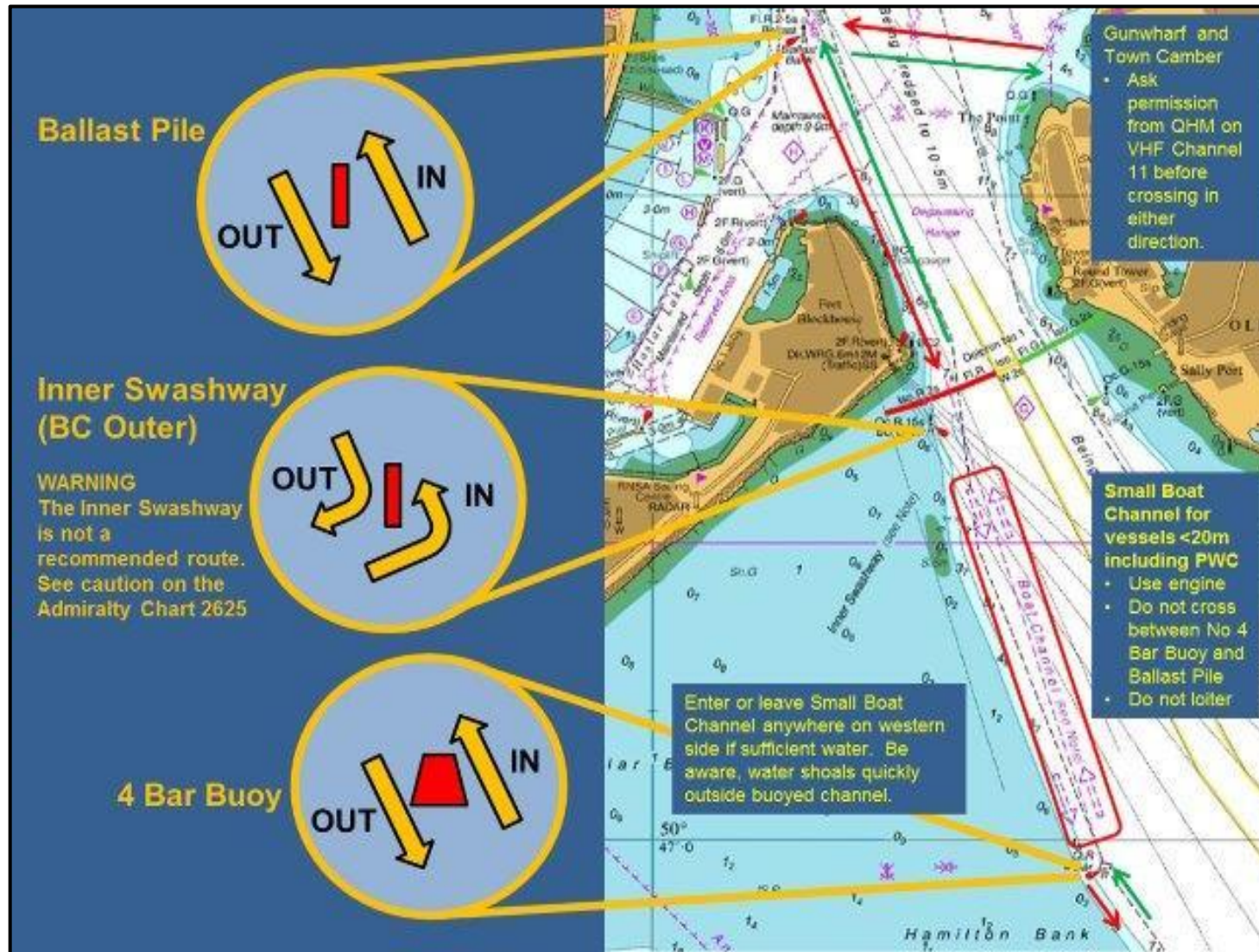


Extract from Queens Harbour Master Portsmouth General Direction 02/17

Full details can be found here:

<https://www.royalnavy.mod.uk/qhm/portsmouth/local-notice/general-directions/2017/1702-portsmouth-harbour-entrance>

Further chart detail can be found on BA Charts 2625 and 2631





Extract from Queens Harbour Master Portsmouth General Direction 02/17

Full details can be found here:

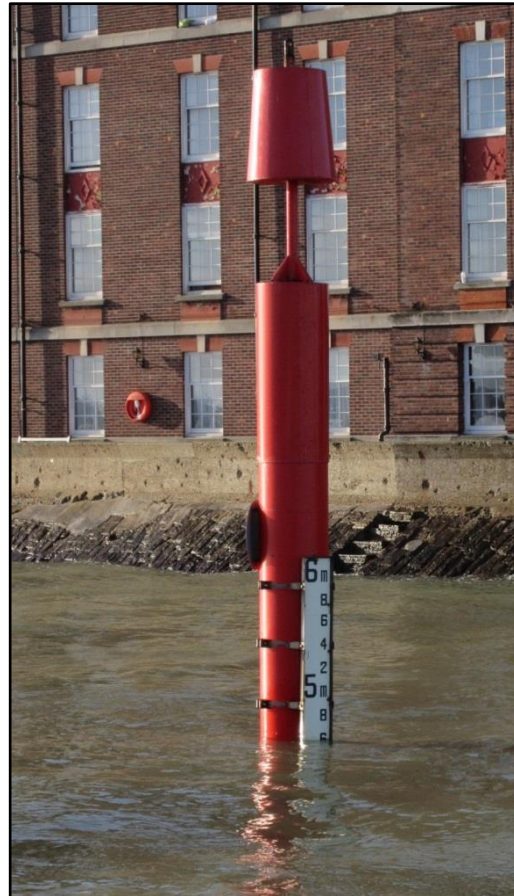
<https://www.royalnavy.mod.uk/qhm/portsmouth/local-notice/general-directions/2017/1702-portsmouth-harbour-entrance>

Further chart detail can be found on BA Charts 2625 and 2631



Ballast Pile

Leave to port in bound & out bound



Tide Gauge at Fort Block House

Consider using Inner Swashway



BC Outer

Leave to port when using Inner Swashway

In bound & outbound